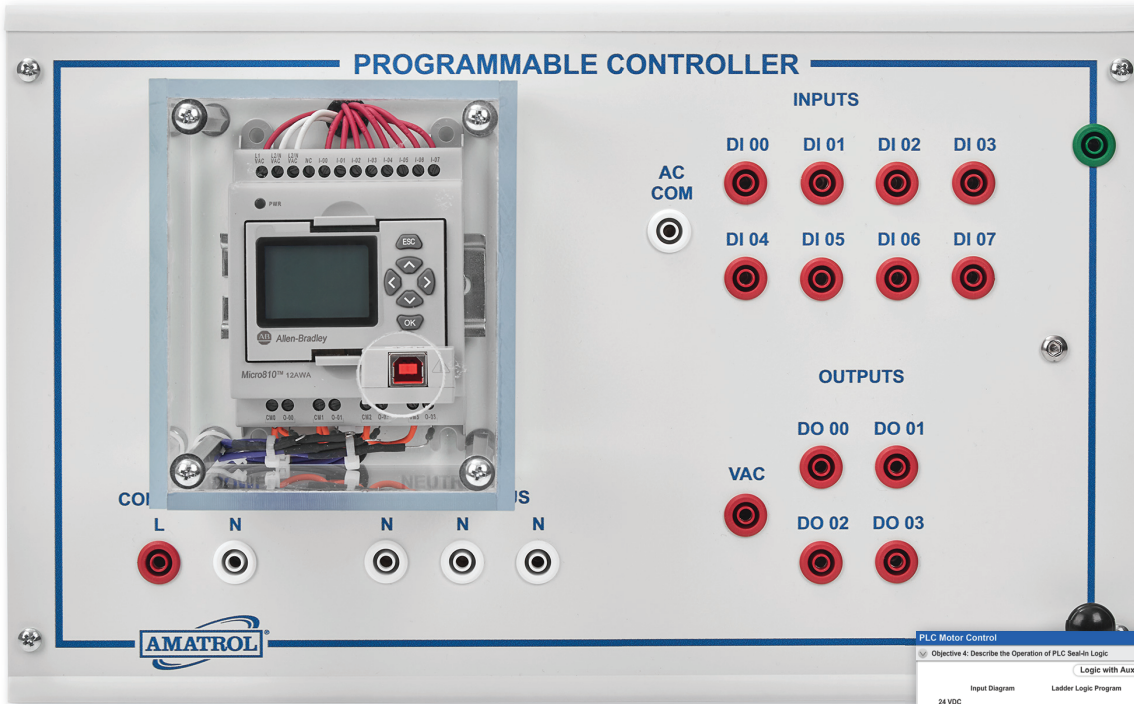
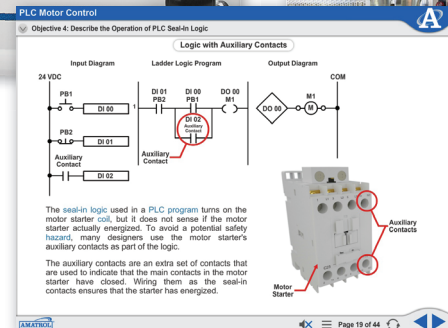


PLC Motor Control Learning System - AB Micro810

85-MT5AB8



PLC Motor Control Learning System - AB Micro810



Interactive Multimedia Curriculum
and Student Reference Guide

Learning Topics:

- PLC Operation
- PLC Program Execution
- Basic PLC Programming
- Editing and Documentation
- PLC Motor Control
- Seal-In Program Logic
- Safety Interlocks
- PLC Timer and Counter Instructions
- On-Delay Timers
- Time-Driven Sequencing

Amatrol's PLC Motor Control Learning System for the Allen-Bradley Micro810 PLC (85-MT5AB8) teaches PLC operation, programming, and motor control, as well as timer and counter instructions. The PLC Motor Control training system adds to Amatrol's Electric Motor Control system (85-MT5) and covers in-depth topics like PLC program execution, PLC program editing and documentation, seal-in program logic, and time-driven sequencing. Skills presented by this learning system are valuable for industrial maintenance technicians in a variety of advanced manufacturing careers.

The major component on the PLC Motor Control system is the Allen-Bradley Micro810 programmable logic controller featuring embedded 10V non-isolated 4 channel analog input and 1 channel analog output for speed control and communicates via EtherNet/IP. This system also includes a lead set, USB communication cable, CCW software DVD, interactive multimedia curriculum, installation guide, and student reference guide. Amatrol provides real-world industrial components to stand up to frequent use and to best prepare learners by practicing on components that they'll actually use in the workplace.



Technical Data

Complete technical specifications available upon request.

Allen Bradley Micro810 Programmable Controller Station
Connected Components Workbench (CCW)
Software DVD
USB Communication Cable
Lead Set
Interactive Multimedia Curriculum (M17726)
Instructor's Guide (C17726)
Installation Guide (D17726)
Student Reference (H17726)

Additional Requirements:
Electrical Motor Control (85-MT5)
Computer, see requirements: <http://www.amatrol.com/support/computer-requirements>

Utilities:
Electricity (120 VAC/60 Hz/1 phase)

Practice Hands-On Skills Like Entering and Operating PLC Programs for Various Applications

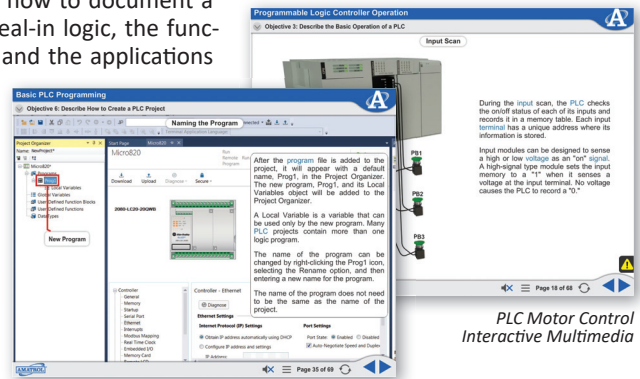


Allen-Bradley Micro810 PLC

Learners will use the PLC Motor Control system to practice a variety of hands-on electrical and PLC skills to build real-world, applicable competencies for industry. Some of these skills include: open and view a PLC project, create and enter a PLC program, enter and operate a PLC program that uses internal input and output instructions, enter and operate a PLC program that uses an on-delay and off-delay PLC timer instructions, and many more!

Interactive Multimedia Curriculum for PLC Motor Control Skill-Building

Amatrol's PLC Motor Control multimedia curriculum allows learners to study a variety of topics, such as: the basic components of a PLC, how to run and monitor a PLC program, the operation of a PLC output instruction, how to document a PLC program, the operation of seal-in logic, the functions of a PLC timer instruction, and the applications of time-driven sequencing. Amatrol's peerless interactive multimedia curriculum utilizes text with voiceovers, pictures, videos, stunning 3D animations, and interactive quizzes and reviews that engage learners in theoretical knowledge and concepts.



PLC Motor Control Interactive Multimedia

Even More Learning Expansions for Electric Motor Control!



Electric Motor Control with Optional Expansion Systems

The PLC Motor Control system is just one option for electrical motor control training. Other options include Motor Braking (85-MT5A), Reduced Voltage Starting (85-MT5B), Variable Frequency AC Drive (85-MT5C), Electronic Sensors (85-MT5D), Electronic Counter (85-MT5E), and SCR Speed Control (85-MT5F).

Student Reference Guide

A sample copy of this course's Student Reference Guide is included with the learning system. Sourced from the curriculum, the Student Reference Guide takes the entire series' technical content contained in the learning objectives and combines them into one perfectly-bound book. If you would like to inquire about purchasing additional Student Reference Guides for your program, contact your local Amatrol Representative for more information.

